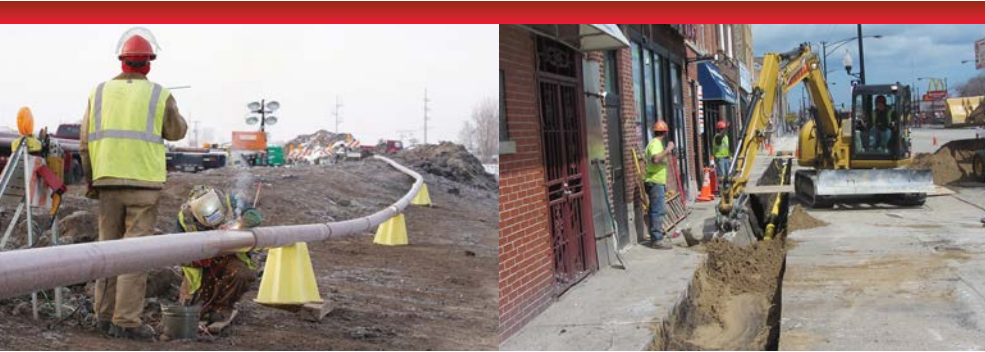


Committed to Customer Service

Michels Utility Services, Inc. is committed to constructing and maintaining natural gas distribution systems and other utilities throughout the United States. We complete complex projects in both urban and rural areas for customers and communities.

Services include:

- Distribution pipeline construction
- New main and service line installations
- Joint installations (gas, power, telecommunications, cable television, etc.)
- Main extensions and conversions
- Integrity management
- Cast iron and bare steel replacement programs
- Riser, meter, customer piping and relight services
- Steel and polyethylene (PE) pipe capabilities, including large diameter HDPE pipe installation
- Master service and blanket agreements
- Open cut, plowing and horizontal directional drilling
- Distribution regulator stations and vault installations



A glance under a blanket contract

A blanket contract can be an effective partnership between Michels Utility Services, Inc. and a utility customer, ensuring the prompt availability of skilled, locally knowledgeable and authorized crews to perform necessary work.

Here is a look at how Michels Utility Services, Inc. annually helps a utility in the upper Midwest meet its customers' ever-growing needs for services in a rapidly expanding metropolitan area:

- More than 600 skilled personal and 1,500 pieces of equipment dedicated to the contract
- 1.25 million feet of gas main installed
- 7,000 new service lines installed
- 13,000 service lines upgraded and replaced

Our crews:

- **work safely and efficiently** from congested metro areas to rural country land
- **collaborate** with local technical college programs to increase availability of a qualified workforce
- are **committed to communicating** pertinent project information to customers and communities
- **incorporate safety** into everything we do. The safety and health of our people, our contractors and our customers is the highest core value.

MICHELS[®]
UTILITY SERVICES, INC.

www.Michels.us

Local. Everywhere.



Natural Gas Conversion

Nowthen, Minnesota
2020

- 60,000 feet of 2-inch and 4-inch plastic main
- 130 residential service connections
- Open-cut, plowing, pneumatic boring and directional drilling

10-week Pilot Program

Forrest City, Arkansas
2018

- 12 crews and equipment
- 2-inch plastic and 4-inch piles
- Mainline installations and replacements
- Work conducted over winter season

Creek Crossing

Neenah, Wisconsin
2020

- 60-foot rock trench
- 4 feet wide by 12 feet deep
- Installation of 4-inch polyethylene gas pipe
- Aqua dam and bypass of creek
- 5-day completion window

Joint Trench Installation

Sherwood, Wisconsin
2020

- 5,000 feet of polyethylene gas pipe
- 9,500 feet of electrical conductor
- 9,500 feet of communication cable
- 12 power transformers
- 71 communications pedestals
- Plowing an open-cut installation
- 20-acre subdivision

An overview of the collective strength of the **MICHELS**[®] Family of Companies



8,000 people
strong



14,000 pieces
of equipment

1959

founded in



40+ offices in
North America



ENR's Top 400
Contractor's List

MICHELS[®]
UTILITY SERVICES, INC.

www.Michels.us