



**MARINE OPERATIONS**

**WE DO THAT ... & MORE**

## **Working on, in and around water**

Michels Marine, a division of Michels Construction, Inc., performs specialty marine construction services on shorelines, harbors, inland lakes and river systems. Our crews work above and below water on diving, dredging, inspection, surveying and marine construction projects. From building dock structures to using dredges to restore navigation channels, our team respects and appreciates water both as our primary jobsite and a resource we know how to improve and preserve. Through our legacy companies, Michels has more than 100 years of marine construction experience and is a premier national marine contractor.

## CONSTRUCTION



Michels Marine builds and maintains the specialty mechanical, structural and natural components of marine projects and environments.

- Hydroelectric
- Lock & dam
- Railroad
- Deep foundations
- Ports, harbors, docks & terminals
- Marine support
- Rock placement
- Habitat rehabilitation & enhancement
- Bridges
- Island building
- Scour & erosion repair

## DREDGING



Michels Marine uses a fully transportable fleet of hydraulic, mechanical and amphibious dredging assets to facilitate maintenance, restoration and environmental remediation projects.

- Waterway restoration
- Contaminated sediment mitigation
- Wetland restoration
- Environmental cleanup & remediation
- Ability to reuse extracted material



Providing collaborative, value-engineered solutions in complex marine environments

WE DO THAT ... **& MORE**

## SAFETY

Safety is the Cornerstone of Our Culture. Before we start any water- or land-based activity, we develop detailed site-specific safety plans to keep safety at the forefront of all operations. Our team is trained and certified, our equipment is meticulously maintained & tested, and our plans include the necessary redundancies to minimize risk.



## DIVING



Our divers are commercially certified, experienced with highly technical underwater solutions, and have a safety-first mindset.

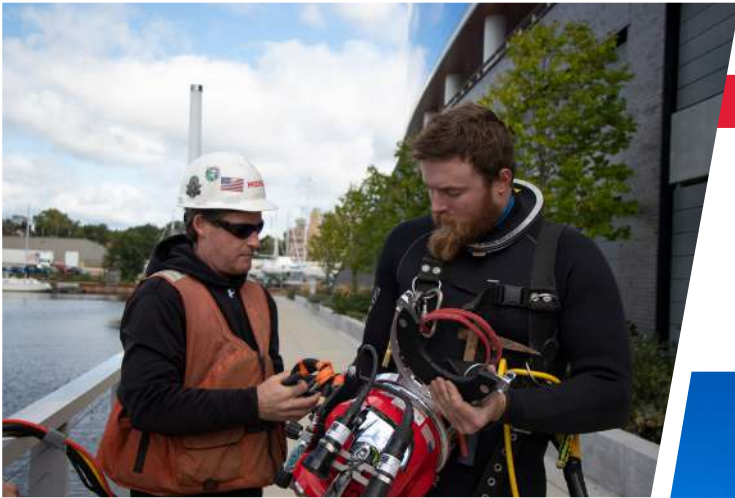
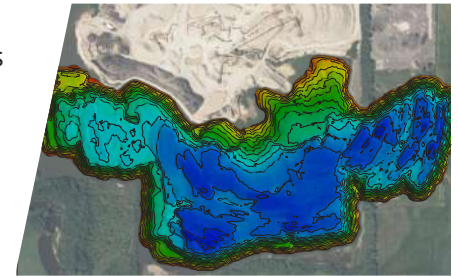
- Inland & offshore diving
- All phases of underwater construction for:
  - Pipelines
  - Offshore wind developments
  - Ports & terminals
  - Hydroelectric facilities
  - Nuclear facilities
- Underwater concrete & epoxy inspection, remediation & removal
- Salvage & recovery
- Pre- and post-site surveying
- Contaminant dredging assistance
- Underwater welding & burning
- Scour surveys & remediation
- Marine infrastructure inspections & repair
- Ship husbandry & repair
- Emergency services

## SURVEYING



Using highly technical equipment, we gather invaluable information and models of underwater conditions.

- Multi- & single-beam acoustic bathymetry
- Side-scan sonar & 3D acoustic imaging
- RTK GPS & PPK positioning solutions
- Inspection class ROV
- sUAS with LiDAR and photogrammetric data



## EXPERIENCE

Our commercial divers include some of the industry's most experienced, accomplished underwater construction professionals who mentor and collaborate with promising and dedicated new talent. We demand complete teamwork to ensure safe, successful projects and sustainable operations.

## EQUIPMENT

Michels makes significant, ongoing investments to ensure our field crew and divers have the safest, most efficient tooling to tailor unique solutions for each project.



## We Do That

Marine construction  
Diving  
Dredging  
Surveying

## ... & More

Earth work  
Deep foundations  
Pipe fusing  
Crew transfer vessels  
Trenchless construction  
Transmission line foundations, structures & wires  
Substations & converter stations  
Inside wiring  
Subsea cable repairs  
Riprap & armor stone supplier



### Prairie du Sac Dam Rehabilitation

*Prairie du Sac, WI*  
June 2022 - November 2026

**Method: Construction**

- Replacement of 41 tainter gates
- 18 sectional barges, 2 cranes & truckable tug
- Work completed via floating plant
- Hydroelectric dam improvements



### Schuylkill River Phase 1

*Philadelphia, PA*  
August - October 2022

**Method: Dredging**

- Hydraulic removal of 26,000 CY of material
- Transported by scow barges to 80-acre disposal facility
- Owner: U.S. Army Corps of Engineers

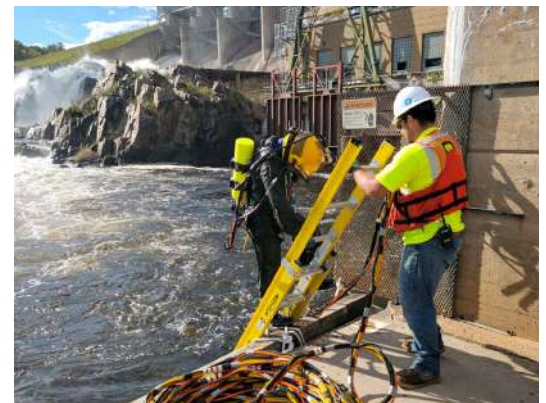


### Florence Bend Bedrock Excavation

*Omaha, NE*  
May - November 2022

**Method: Construction**

- Removal of 223,000 tons of bedrock from river bottom
- Maintains commercial navigation channel
- All work completed via floating plant
- Owner: U.S. Army Corps of Engineers



### Michigamme Falls Improvements

*Crystal Falls, MI*  
August - November 2021

**Method: Construction, Dredging**

- Modified & repaired powerhouse draft tube gates & slots
- Inspected and repaired piers via commercial divers
- Installed bulkheads



WE DO THAT ... & MORE

### Offshore Wind

Did you know Michels supports offshore wind projects with turnkey engineering and execution packages from inter-array cables to landfalls to connection to the existing power grid?

**MICHELS**<sup>®</sup>  
CONSTRUCTION, INC.

[www.Michels.us](http://www.Michels.us)

An overview of the collective strength of the **MICHELS** Family of Companies



8,000 people strong



18,000 pieces of equipment

1959

founded in



50+ locations globally



ENR's Top 400 Contractor's List

Visit our website to learn more about our marine solutions.